



Poly-Check Fixed Length Seal

The Poly-Check is an economical, fixed length plastic seal well established in the logistics world for the sealing of trailers.

Applications

- Railroad cars
- Trucks & trailers
- Intermodal containers
- Tote boxes
- Cabinet/doors/hatches
- Gates and fire doors
- Side curtains & tilts
- In-bond shipments



Features

- One piece seals for maximum security and proper sealing engagement.
- Plastic seal blushes if tampered with.
- Positive snap lock design with protruding locking points, verify locked position.
- As an alternative to "cutting" each seals has an integral break point for easy, authorised removal.

Stock colours

- Red
- Blue
- Green
- Yellow

Marking

- Hot Stamped Printing:
- Numbering: 7 digits Lettering: 3 lines of 8 characters
- Laser and thermally printed barcoding available on extended flag.



Material

- Polypropylene

Dimensions

- 10" Poly-Check (6732110.xx)

Overall length: 289mm (11.5") x 7mm (.28")
 Tail: 245mm (9.65") x 7mm (.28")
 Flag: 50mm (2.0") x 19mm (.75")

Strength

Average pull apart force for polypropylene:
 With standard integral security/break point - 65lbs/29.5kgs
 Non standard solid strap type - 90lbs / 40.8kgs

Patents

Europe 0708954 Canada 2,201,488
 US 5,441,316; 5,533,767 S.Africa 95/2266
 Mexico 943591 Brazil PI 9510053.9

Packaging

Delivered in mats of 10 seals boxed in 1000's
 Box dimensions:
 10" version (LxWxH) 550x230x200mm 3.8Kg

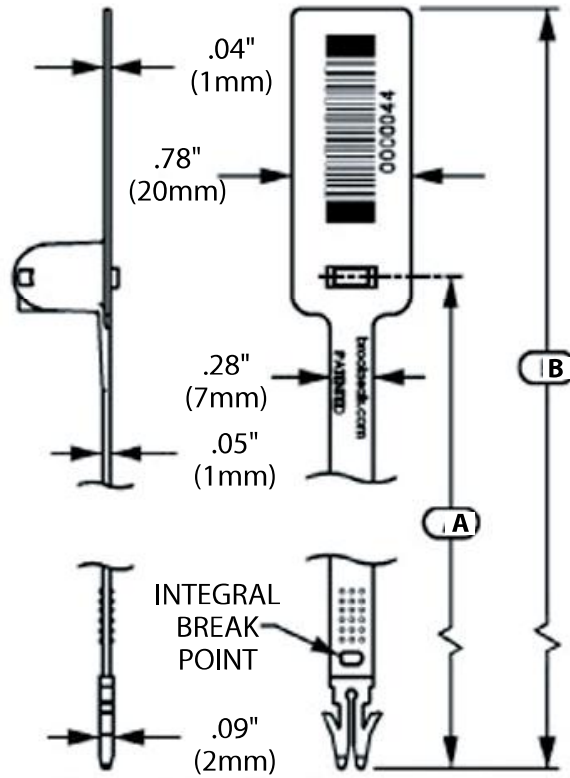


Poly-Check Fixed Length Seal



Poly-Check Fixed Length Seal

The Poly-Check is an economical, fixed length plastic seal well established in the logistics world for the sealing of trailers.



Known as the;	A = Strap Length	B = Overall Leng
5"	5.11" (130mm)	6.85" (174mm)
7"	6.69" (170mm)	8.43" (214mm)
10"	9.65" (245mm)	11.735" (289mm)

The locking prongs protrude from the dome to verify seal is "locked"

