

FlexSecure FS 15

The FlexSecure FS 15 is a 1.5 mm (1/16") anodized aluminum bodied cable seal. FS 15 is regularly used in bulk food and chemical shipments over the road.

Applications

| | |
|----------------------|------------------------|
| High Value Shipments | Container Door Latches |
| Trailer Door Latches | Valves and Meters |
| Bulk Tankers | Railcars |

Features

- Tamper-evident cable separates into individual strands when cut and cannot be resealed
- Provides added durability over plastic bodied seals but maintains the color identification
- Provides a versatile method of identification
- Can be customized by laser printing a name, logo, consecutive numbers and barcode

Materials

- Main body: Aluminum alloy
- Internal Locking Components: Zinc and Steel
- Cable: galvanized non-preformed aircraft control cable

Strength Characteristics

Average pull apart strength: 727 lbs (330kg)

Dimensions

- Body: 1.12" x 0.90" x 0.24" (28.6x 22.9x6.1mm)
- Cable Diameter: 1.5mm (1/16")
- Cable Length: Standard - 12" (Custom lengths available)

Marking/print

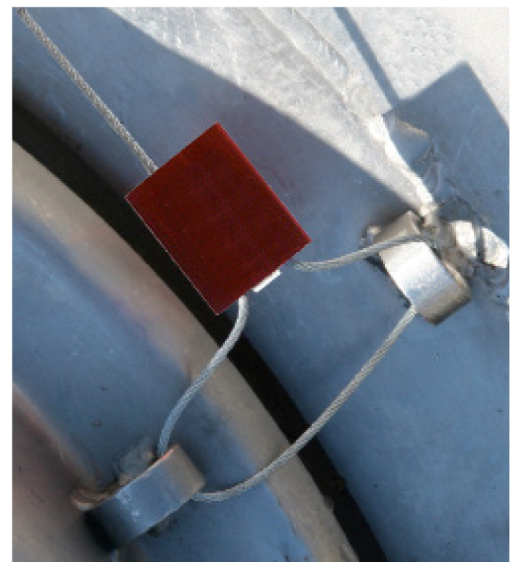
Laser Print: Name, logo, consecutive numbers, barcode.

Stock colours

Black, Red

Packaging

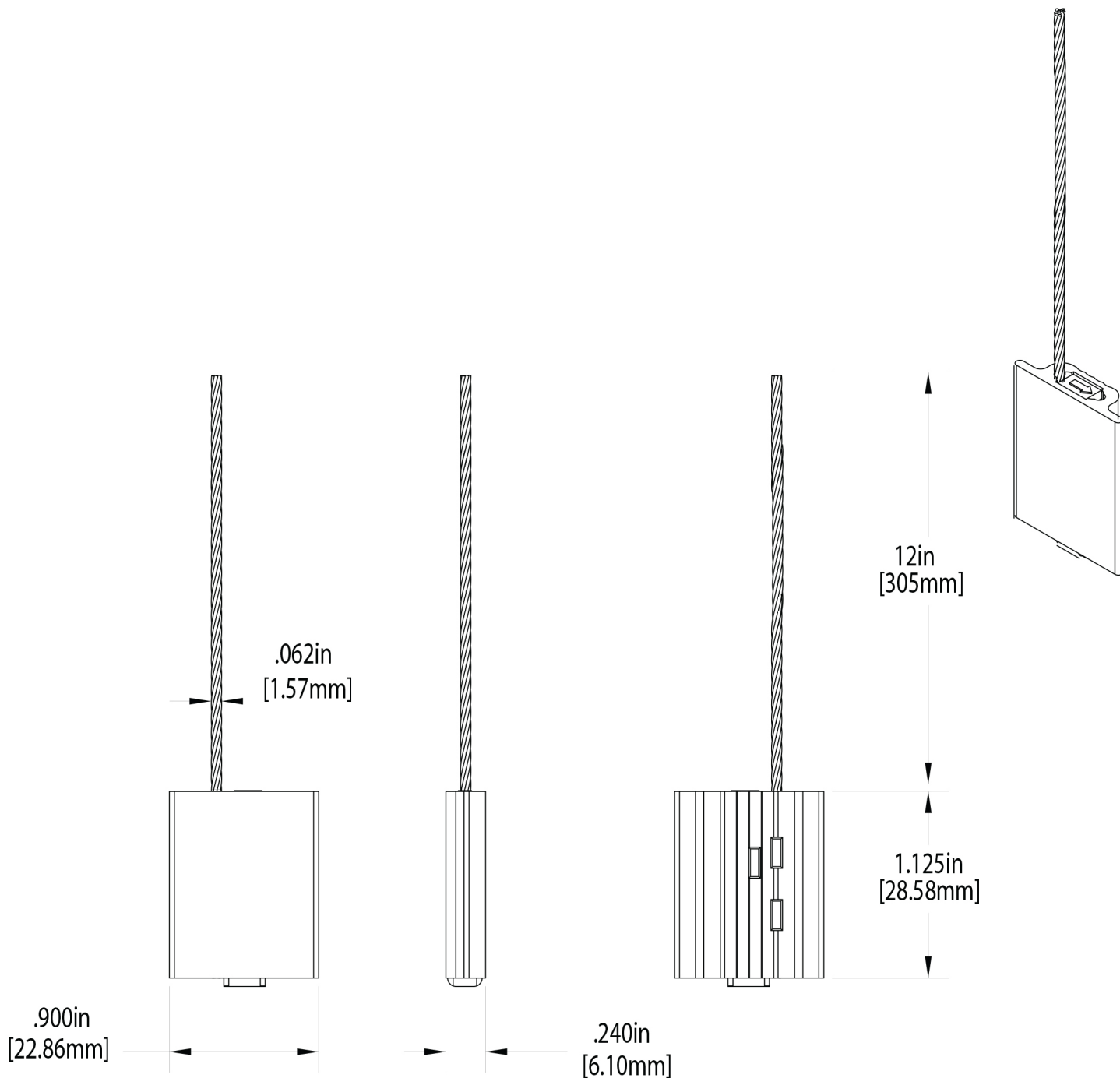
- Standard: 10 per tray, 200 seals per carton
- Box dimensions: 16.5"x 9.5"x 7.25" (420x240x185mm)
- Weight: 9 lbs (4kg)



FlexSecure FS 15



The FlexSecure FS 15 is a 1.5 mm (1/16") anodized aluminum bodied cable seal. FS 15 is regularly used in bulk food and chemical shipments over the road.



FlexSecure FS 15