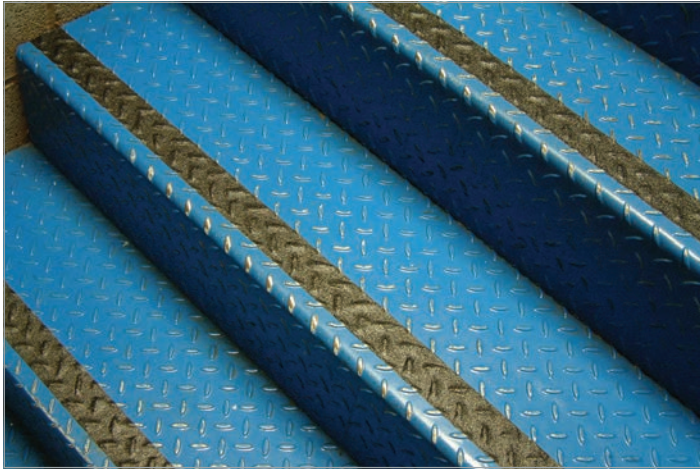


# Gripfoot Conformable



- Ideally suited for slip protection on irregular surfaces
- Abrasive grit surface
- Self-adhesive foiled backing permitting the tape to be rolled or hammered into shape
- Suitable for diamond tread plates, curved or irregular surfaces, machinery or plant equipment

Dimensions (m.)	Weight Kg	Packaging Dimensions (cm.)	Packaging Type	Packaging Volume (m.)	Packaging Quantity	Colour	Part Code
50mm x 18.3m	0.85	20 x 26 x 6	Jiffy Bag	1	27	Black	GF010702
102mm x 18.3m	1.55	20 x 26 x 11				Black	GF031002
152mm x 18.3m	2.35	20 x 20 x 16				Black	GF110002
140mm x 140mm	0.15	18 x 20 x 1.5	Jiffy Bag	10	N/A	Black	GF110001
152mm x 610mm	0.75	18 x 66 x 1.5	Jiffy Bag	10	N/A	Black	GF110003

Material:	Abrasive grit consisting of aluminium oxide bonded to a polymer substrate. Solvent based acrylic emulsion adhesive backing. Product supplied with a moisture resistant release liner.
Surface Finish:	Grit
Grit size:	60 grit
Thickness:	0.75mm+ or – 0.05mm
Resistance to Chemicals:	N/A
Operating Temperature:	-10° to 60° C
Shear resistance:	24hrs 1" x 1" at 1Kg
Coating Thickness:	0.05mm
Solvent Residue:	0.5%
Adhesion:	2.5Kg/1"
Release Force:	13g/m2
Dry Coating Weight:	37g m2
Environmental Resistance:	Suitable for indoor and outdoor environments
UV Resistance:	Yes
Typical Applications:	Suitable for stairs, ladders, ramps, walkways, vehicles and boats.
Installation Method:	Pressure sensitive self-adhesive tape
Product Performance:	Conforms to slip resistance test EN13552 Category R13

Continued on next page

<b>Product Performance:</b>	Fatigue:	N/A
	Slip Resistance:	● ● ● ●
	Wear:	● ● ●
	Low ‡ High	● → ● ● ● ●
<b>Country of Origin:</b>	Taiwan	

End of document